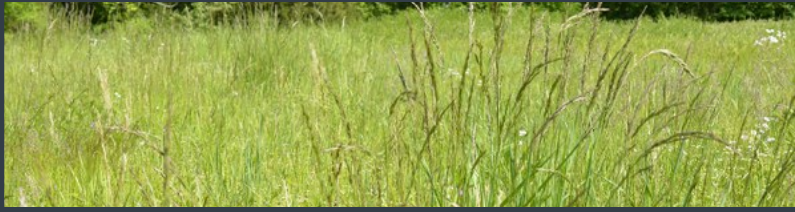


- May 5th, 2024 -

Matthew Deist – ANR Agent
 931.967.2741 or mdeist@utk.edu



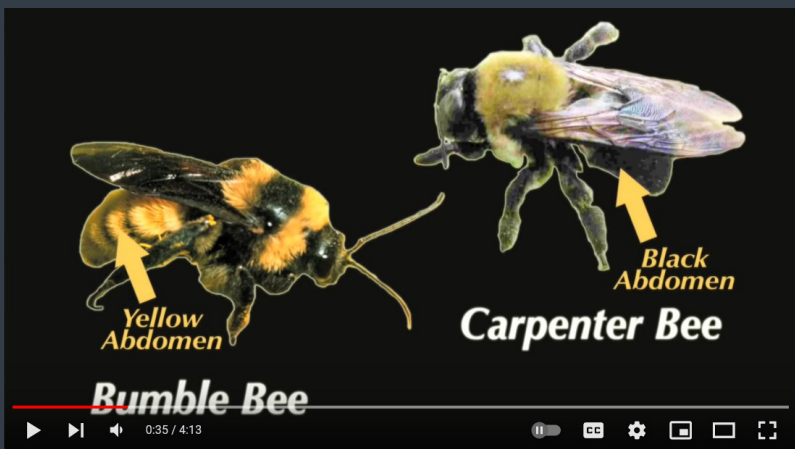
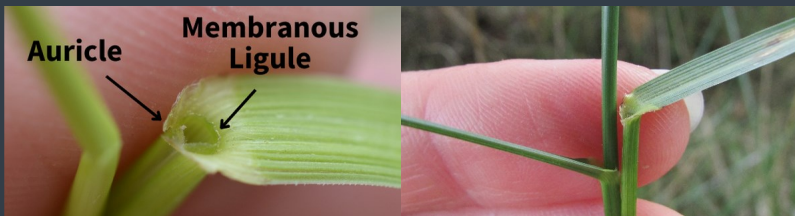
Identifying Tall Fescue

Tall Fescue is a staple in pastures, hayfields, and even home lawns. However, some people have difficulty identifying it, especially if it hasn't gone to seed. There are several ways to differentiate between tall fescue from other grasses. Here are a few to look for:

- **Time of year:** Fescue is a cool season grass. It grows vigorously in cooler weather and typically goes to seed in the spring.
- **Growth pattern:** Grows in clumps, not via stolons or rhizomes like other grasses such as Bermuda or Kentucky Bluegrass.
- **Auricle & Ligule:** Fescue has blunt auricles and a membranous ligule (shown below) while other grasses may be absent both.

For more information on identifying this plant, click the link below.

<https://extension.illinois.edu/blogs/grasses-glance/2023-05-30-identifying-tall-fescue>



Carpenter Bee ID & Control

Carpenter bees are a major pest to homeowners, causing notable and unsightly damage to wood structures. This video linked below, courtesy of Clemson University, gives ID and control tips.

<https://www.youtube.com/watch?v=mYcn7k7-5Dw>



Early Season Thrips Considerations in Cotton

With some cotton in the ground, there are a couple considerations for this early season pest: Of note, ThryvOn varieties are very effective and rarely require foliar treatments. Seed treatments are the standard, but depending on growing conditions, thrip pressure, and weather, a foliar treatment may be needed. Dr. Sebe Brown is a big believer in North Carolina State University's thrips predictor model. A link to the model and a full writeup can be found here:

<https://news.utcropp.com/2024/05/early-season-thrips-considerations-in-cotton/>



Concrete Mites

Concrete mites (left) get their name from the locations they tend to aggregate and are often seen in large numbers scurrying around on sidewalks, patios, and other stone surfaces. These guys are often confused with the "chigger" mite (right), but have a more elongated shape, smear red when squished, and are considered a beneficial. Read more from our colleagues in Alabama at the link below:

<https://www.aces.edu/blog/topics/home/chigger-concrete-mites/>

- Timely Extension Publications -

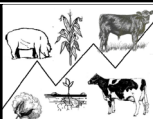
<https://tiny.utk.edu/pubs>

- [Identifying Grass Seedlings - University of Missouri](#)
- [Common Herbicides for Fruit & Vegetable Weed Control](#)

Tennessee Market Highlights

Click below & select May 3rd

<https://tiny.utk.edu/MarketHighlights>



- UT Extension is an Equal Opportunity Provider -